

## A5 Gatefold pop out card

### Materials

2 sheets of A5 card or 1 sheet of A4 halved

Embellishments/ toppers

Backing papers

### Tools

Ruler/ pencil

Craft knife

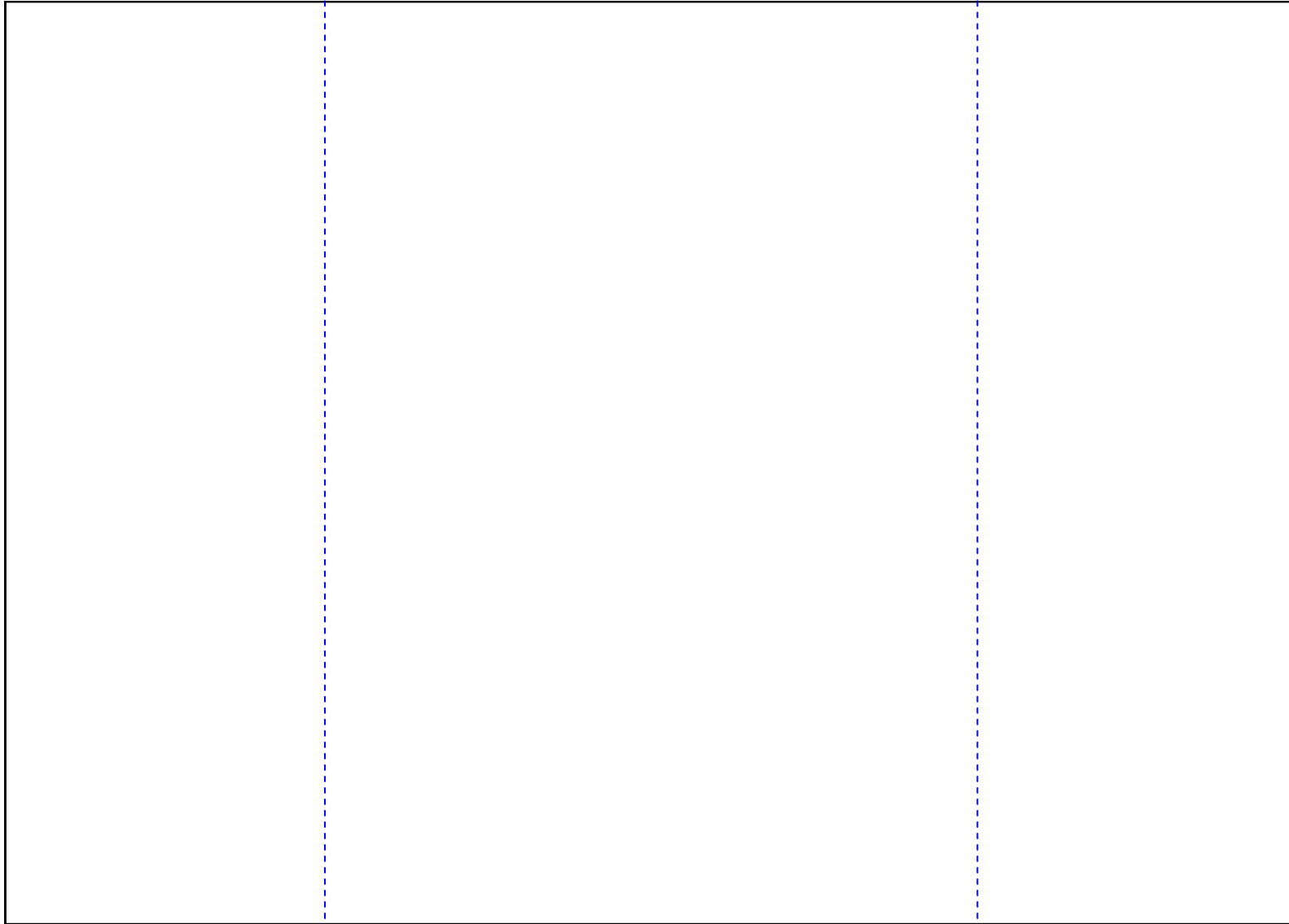
1. Trim one piece of your A5 card to 20x14cm, tip: these days I am a big fan of cheating and use printed cards whenever possible!
2. Score your card at 4.8cm and again at 15.1cm to create a gatefold A6 card.
3. Mark a point 2cm and 7 ½ cm from the left edge and then mark a point 2.2cm and 4.7cm down from the top of the card. Cut a line between these points as in the template.
4. Mark a point 12cm and 18cm then 8.3cm and 12.5cm down and cut 2 further lines.
5. Score between each of the cut lines, these will be your pop outs, score the pop outs in the opposite direction to the main card to make them stand out.





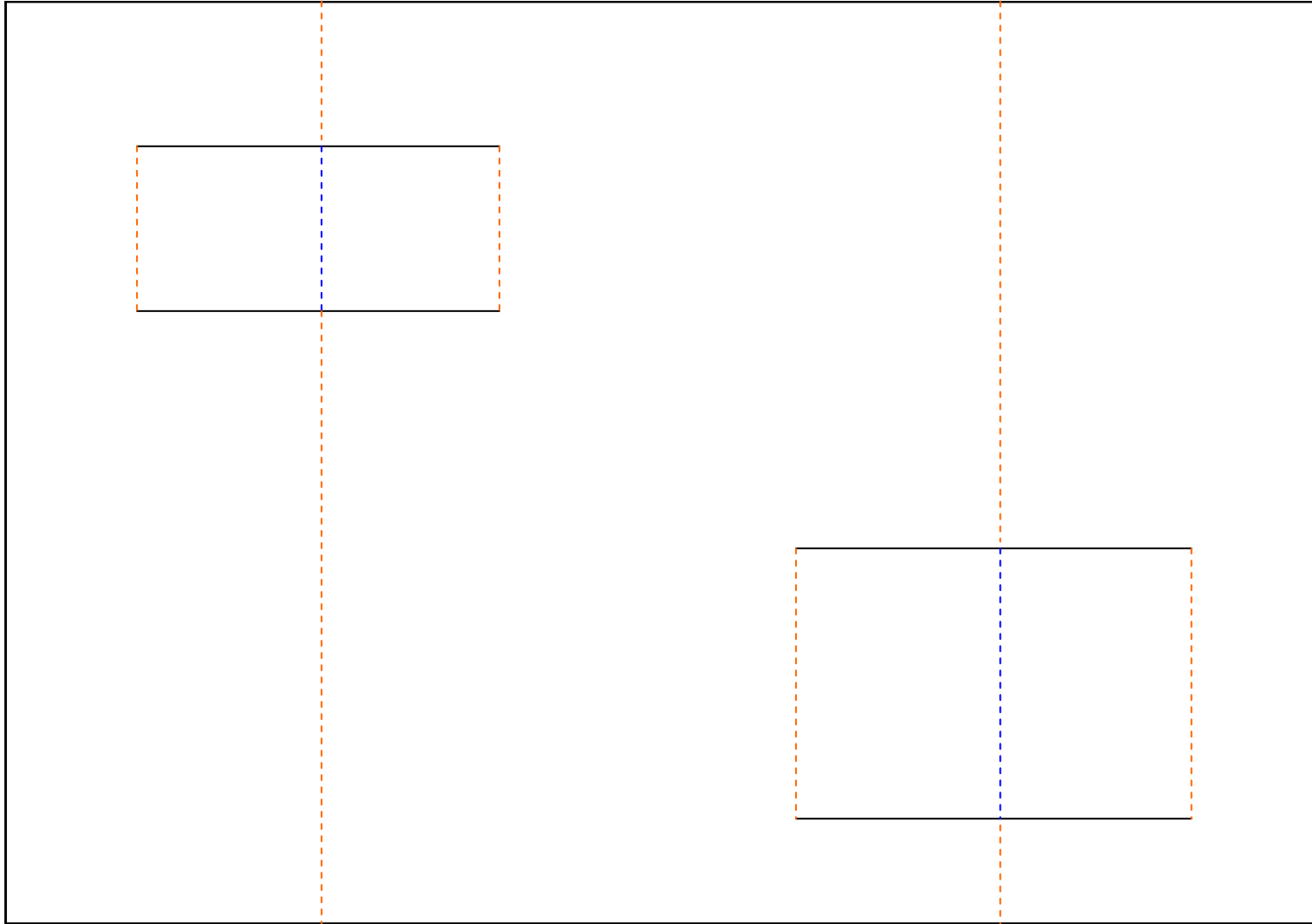
6. If you have a score board, score your other piece of A5 card as an A5 gatefold or at 5.2cm from the left side, turn the card around and score 5.2cm the other end. Glue your inner card to the centre and then glue the side panels, making sure to glue the inner card not the jacket so there is no glue in the pop outs. Decorate your card to taste





Outer A5 gatefold card

[Todieforuk.com](http://Todieforuk.com)



Inner pop out card  
Lay on card and score and cut through