

Book theatre card

Ingredients needed:

4 pieces of A4 card

Card and backing paper for matting and layering, 2 sheets of each

Tape, wet glue

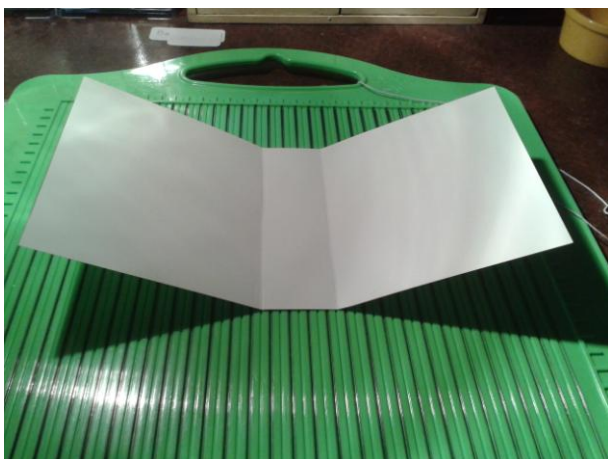
Toppers, die cuts etc

Tools:

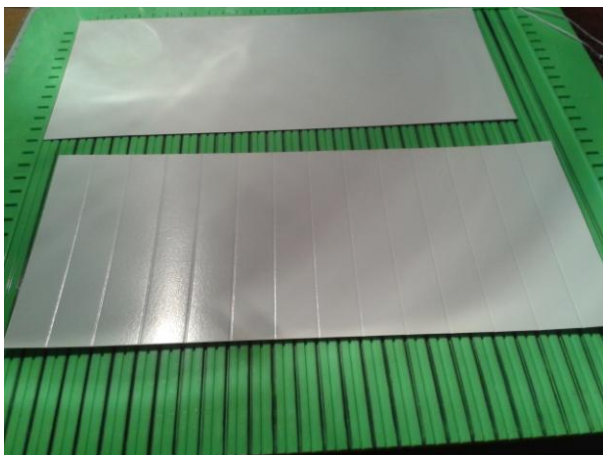
Trimmer, score board or ruler and embossing tool

Cut a piece of card 27x14 cm for the book cover, you may want to use a pre-printed piece of card if you have some in stock otherwise you will need to cover it.

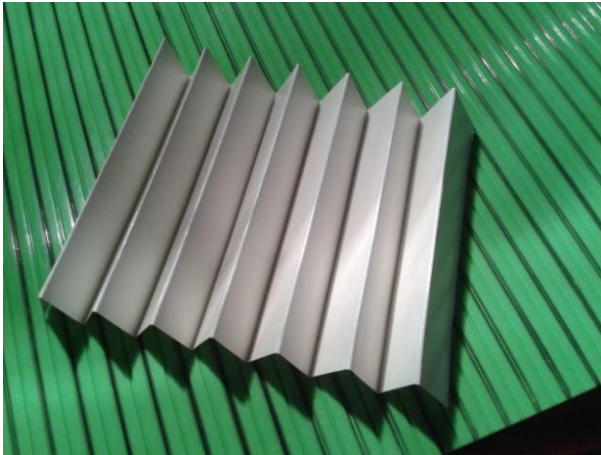
Score the card at 12 and 15 cm from the left side with the cards two longest edges at the top and bottom.



Cut two pieces of card 28x12 cm and two pieces 28x10cm. Again with the two longest sides top and bottom, score every 2cm on all four pieces



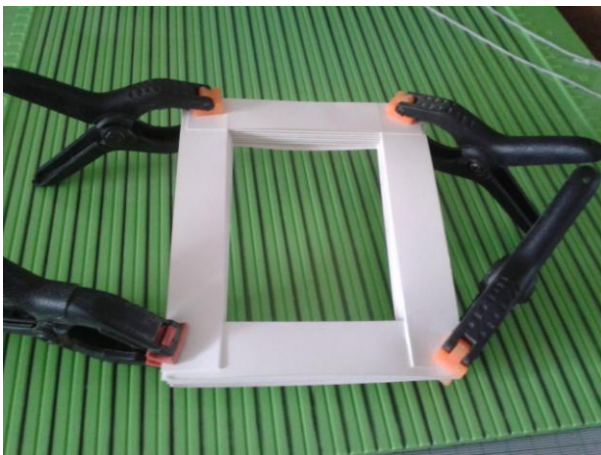
Concertina each of the pieces folding along score lines back and forward



Take one of the short concertinas, these are your top and base. Slot together with one of the longer concertinas (sides) and then the other side, gluing just the ends together to hold in place. (you do not want to glue each fold together as you want to slot toppers in the spaces. I have held it together with some clamps until the glue dries. You could glue your pictures in now for ease (I did mine after the whole thing was finished).



This is the fiddly part! Slot the top piece into both sides



Add a border or frame to hide the joins



Put this aside to dry and concentrate on the book cover now. Cut four mats for the front/ back, inside/ out measuring 11x13 cm and two for the spine 2x13 cm.

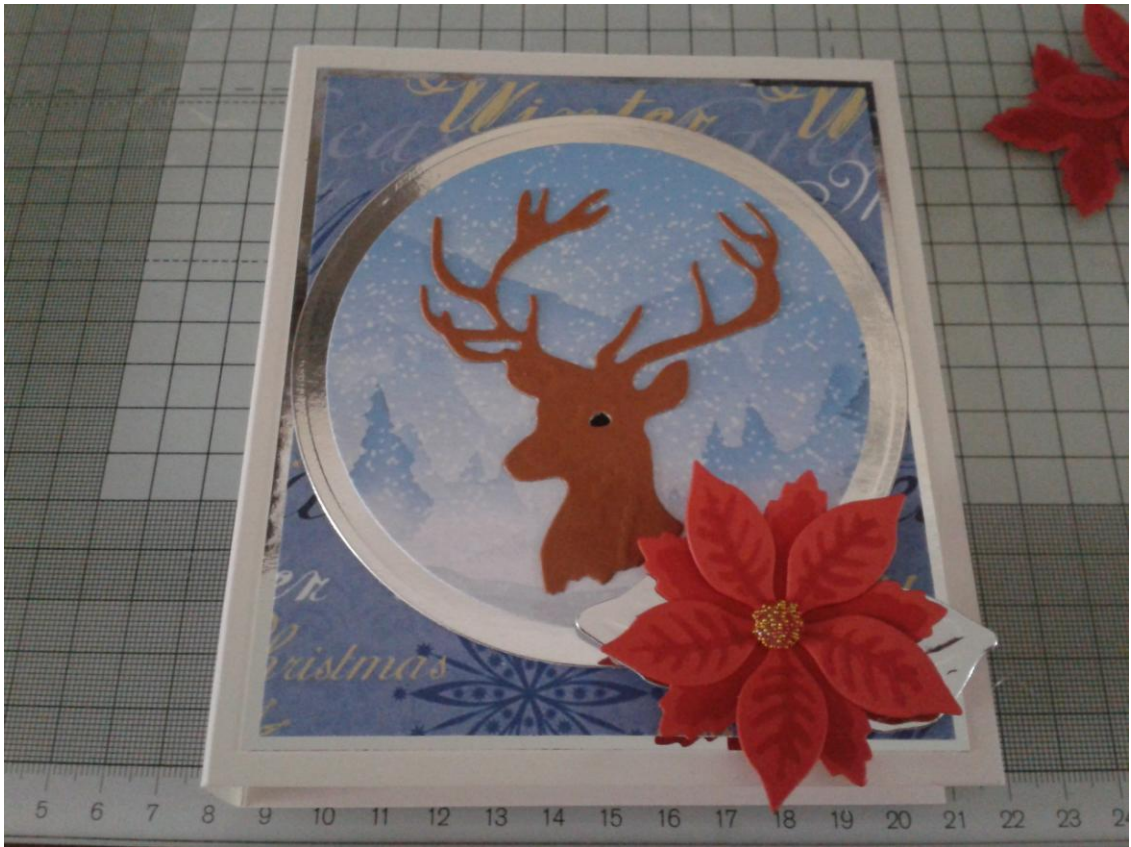
Cut backing papers, four at 10 ½ x 12 ½ and two for the spine 1 ½ x 12 ½ . you may want to make one of the larger panels from different paper as your background to the picture.



Once you have added your pictures/ toppers to the frame glue to the inside of the back of the book cover



Decorate the remainder of the book



I have chosen a Christmas theme but it can be made for any occasion and makes a lovely keepsake for a birth, wedding or special anniversary. @todieforuk.com

Addendum

Tip:

I should have said in my earlier instructions, to add decoupage/die cuts before putting the top concertina on which makes life a bit easier!

Measurements for the box:

Base: 21cm x 19 ½ cm, score all the way round at 3 ½cm

Lid: 19.3cm x 17.8cm, score all the way round at 2 ½cm